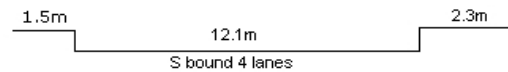
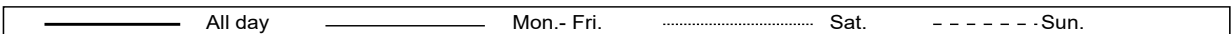
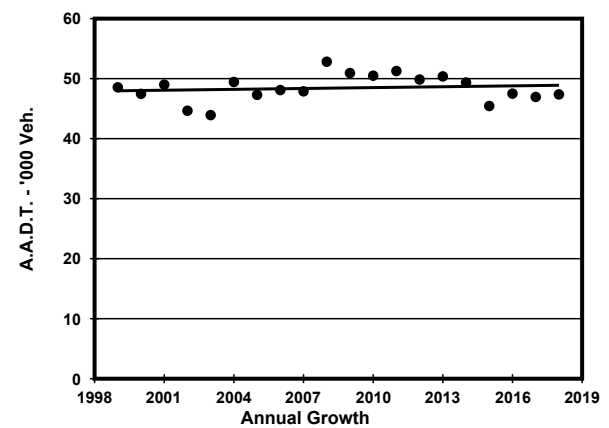
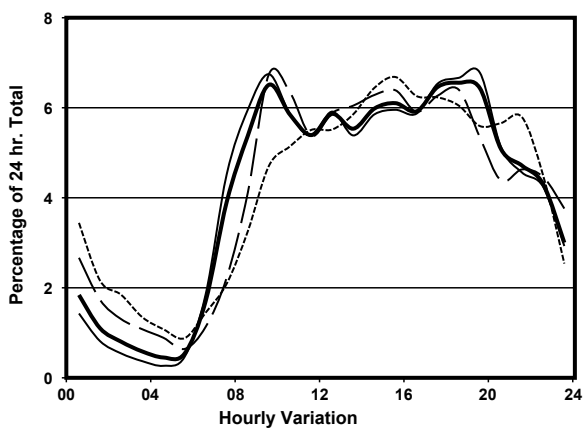
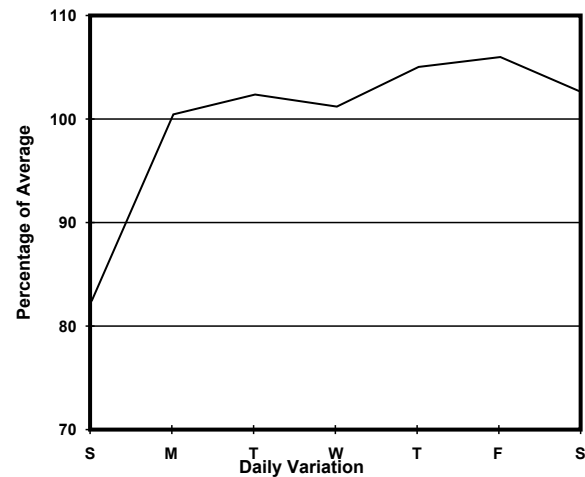
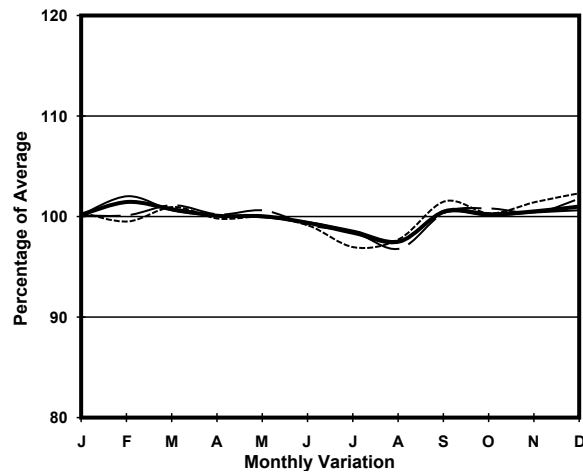


YEAR 2018
 COVERAGE (B) STATION 2212
 ROAD NETWORK MAJOR
 ROAD TYPE PRIMARY DISTRIBUTOR

LINK COTTON TREE DRIVE (from QUEENSWAY to SLIP RD
 TO KENNEDY RD)



1. TRAFFIC FLOW VARIATION AND GROWTH



2. TRAFFIC CHARACTERISTICS (BY DIRECTION)

Parameter	All - Day	Mon. - Fri.	Sat.	Sun.
SOUTH BOUND				
A.A.D.T.	47370	49250	49060	39420
R 12 / 24 - %	69.5	70.6	68	63.7
R 16 / 24 - %	90	91.3	86.8	85.3
AM Peak Hour	0900-1000	0900-1000	0900-1000	0900-1000
One-way flow at AM peak hour	3080	3320	3310	1860
T - % (AM)	-	3.6	-	-
PM Peak Hour	1800-1900	1800-1900	1800-1900	1600-1700
One-way flow at PM peak hour	3110	3280	3140	2470
T - % (PM)	-	3.6	-	-
Prop.of commercial vehicles - 16 hr.	-	3.8	-	-
 A.A.D.T.	-	-	-	-
R 12 / 24 - %	-	-	-	-
R 16 / 24 - %	-	-	-	-
AM Peak Hour	-	-	-	-
One-way flow at AM peak hour	-	-	-	-
T - % (AM)	-	-	-	-
PM Peak Hour	-	-	-	-
One-way flow at PM peak hour	-	-	-	-
T - % (PM)	-	-	-	-
Prop.of commercial vehicles - 16 hr.	-	-	-	-

3. OTHER INFORMATION AND COMMENT

4. Vehicle classification and occupancy - Monday to Friday

Time		Class of vehicle									
		Motor Cycle	Private Car	Taxi	Private LB	PLB	Goods veh.		Non Fr. Bus	Fr. Bus	
							Light	M & H		SD	DD
0700-0800	Pro	1.9	41.5	38.2	3.0	4.2	3.7	0.9	5.6	0.6	0.7
	Ocp	1.0	1.5	2.2	8.5	13.8	1.7	1.6	11.6	41.3	52.3
0800-0900	Pro	2.2	50.4	34.1	0.8	2.1	5.4	0.8	3.6	0.3	0.4
	Ocp	1.0	1.3	1.9	5.3	11.1	2.1	1.8	5.1	43.3	52.2
0900-1000	Pro	2.5	46.5	35.1	0.2	2.2	9.7	0.2	2.8	0.1	0.5
	Ocp	1.0	1.3	1.9	3.0	11.1	2.0	2.0	7.3	34.0	27.9
1000-1100	Pro	2.9	45.8	33.1	0.4	2.5	11.0	0.9	2.6	0.4	0.6
	Ocp	1.0	1.2	1.8	3.3	7.1	1.5	1.5	4.7	15.3	15.7
1100-1200	Pro	2.1	47.0	31.2	0.6	2.2	12.7	0.5	2.7	0.3	0.6
	Ocp	1.0	1.4	1.9	2.0	7.6	1.6	1.7	5.4	12.7	19.2
1200-1300	Pro	3.2	50.6	32.5	0.8	2.3	7.3	0.1	2.5	0.3	0.5
	Ocp	1.0	1.4	2.1	6.3	8.6	1.8	2.0	6.8	15.6	20.6
1300-1400	Pro	1.9	49.7	35.3	0.5	1.4	8.6	0.6	1.0	0.3	0.7
	Ocp	1.0	1.4	2.2	1.7	8.7	1.7	2.0	9.0	12.3	21.1
1400-1500	Pro	2.0	47.1	33.1	1.1	2.0	10.5	0.5	2.8	0.4	0.5
	Ocp	1.0	1.5	2.2	2.3	10.5	1.6	1.0	5.1	16.6	23.4
1500-1600	Pro	2.4	53.5	30.7	1.5	1.9	5.2	0.4	3.4	0.3	0.7
	Ocp	1.2	1.4	2.0	4.4	9.6	1.5	2.0	7.9	12.9	16.2
1600-1700	Pro	1.6	58.3	27.7	1.5	1.7	4.9	0.0	3.3	0.4	0.6
	Ocp	1.0	1.4	2.1	3.7	10.5	1.4	0.0	7.0	16.4	26.3
1700-1800	Pro	0.7	52.3	36.5	0.4	2.6	2.4	0.0	4.2	0.3	0.6
	Ocp	1.0	1.3	2.1	2.0	10.3	1.6	0.0	6.7	17.7	32.2
1800-1900	Pro	3.0	51.1	39.4	0.0	1.9	1.0	0.1	2.8	0.3	0.4
	Ocp	1.0	1.3	2.2	0.0	11.4	2.0	3.0	11.0	28.8	42.6
1900-2000 Peak hour	Pro	2.4	51.3	40.7	0.0	1.5	1.1	0.0	2.4	0.3	0.4
	Ocp	1.1	1.2	2.2	0.0	13.3	1.5	0.0	9.8	16.8	36.1
2000-2100	Pro	3.2	44.1	47.3	0.0	1.5	1.8	0.0	1.2	0.3	0.6
	Ocp	1.0	1.4	2.3	0.0	11.0	1.3	0.0	6.3	10.9	32.1
2100-2200	Pro	2.1	37.4	56.6	0.0	1.5	0.8	0.2	0.5	0.4	0.6
	Ocp	1.1	1.5	2.2	0.0	11.1	1.2	1.0	1.7	8.3	30.1
2200-2300	Pro	0.8	40.0	55.8	0.0	1.5	0.8	0.0	0.0	0.4	0.7
	Ocp	1.3	1.4	2.4	0.0	9.0	1.3	0.0	0.0	6.6	26.9
16 hours	Pro	2.2	48.3	37.5	0.6	2.0	5.4	0.3	2.6	0.3	0.6
	Ocp	1.0	1.3	2.1	4.9	10.4	1.7	1.7	7.5	19.6	29.0

Legend

Pro. Proportion of vehicles in % (Sum may not add up to 100% due to figure rounding)*

Ocp. Average occupancy of vehicles including both driver and passengers*

M&H Medium and Heavy

***** All traffic data are collected from combined bounds except for one way traffic